

# ScanScope® with Oil Immersion

## CS • GL • GL-E

See more with your ScanScope®— now with dry scanning and the oil immersion option.

Add the oil immersion option to your ScanScope CS, GL, or GL-E to scan glass slides with a dry or oil immersion objective for standard or high-resolution visualization.

Designed specifically for hematopathology and microbiology applications, a ScanScope with Oil Immersion uses high

*“The image quality of the blood and bone smears produced by our ScanScope with Oil Immersion is equal to or better than what I can see under my microscope.”*

*– Dr. Doug Tkachuk, University of Toronto,  
Princess Margaret Medical Center*

numerical aperture oil immersion optics, allowing you to capture the same level of detail as when viewing your glass slides under a microscope. Create digital slides of blood smears, bone marrow, Gram stains, and other specimens, and then view, manage, and analyze your digital slides with Spectrum™ information management software.

### CREATE, VIEW, AND EDIT

- Rapidly load and scan using dry or oil immersion objectives
- Create digital slides in multiple formats: TIFF (SVS), CWS, JPG
- Create standard resolution digital slides with dry objective scanning
- Create high-resolution digital slides with oil immersion scanning
- View and edit digital slides with our user-friendly and freely downloadable ImageScope™ viewing software
- Connect multiple, remote colleagues through digital slide conferences
- Switch between dry and oil immersion optics quickly and easily

### OPTIONS

- ScanScope® CS with Oil Immersion
- ScanScope® GL with Oil Immersion
- ScanScope® GL-E with Oil Immersion



# Specifications\*

## SLIDE LOADING

Dry: Five slide, automatic  
Oil: Single slide, manual

## SPEED (15 x 15 MM)

Dry: <2 min/slide at 20x  
Oil: ~20 min/slide at 83x

## 2 x 3" FORMAT (DRY ONLY)

Yes (52 x 76 mm)

## OBJECTIVE

Dry: 20x/0.75 Plan Apo  
Oil: 60x/1.35 Plan Apo

## SCANNING MAGNIFICATION

Dry: 20x  
Dry: 40x (20x with 2x mag changer)  
Oil: 83x

## RESOLUTION

20x: 0.50 µm/pixel  
40x: 0.25 µm/pixel  
83x: 0.17 µm/pixel

## IMAGE COMPRESSION

JPG2000, JPG, LZW

## IMAGE FILE FORMAT

TIFF (SVS), CWS, JPG

## TYPICAL SCANNING REGION (H x W)

Dry: 26.3 x 54 mm  
Dry: 50 x 54 mm (large format)  
Oil: 10 x 10 mm (maximum)

## BARCODE SUPPORT

2-D: Datamatrix  
1-D: 2-of-5, Code 39, Code 128

## DIMENSIONS (W x D x H)

12.5 x 19 x 20.5" (318 x 465 x 502 mm)

## WEIGHT

55 lbs (25 kg)

## MONITOR

24" high-resolution LCD (1920 x 1200)

## POWER

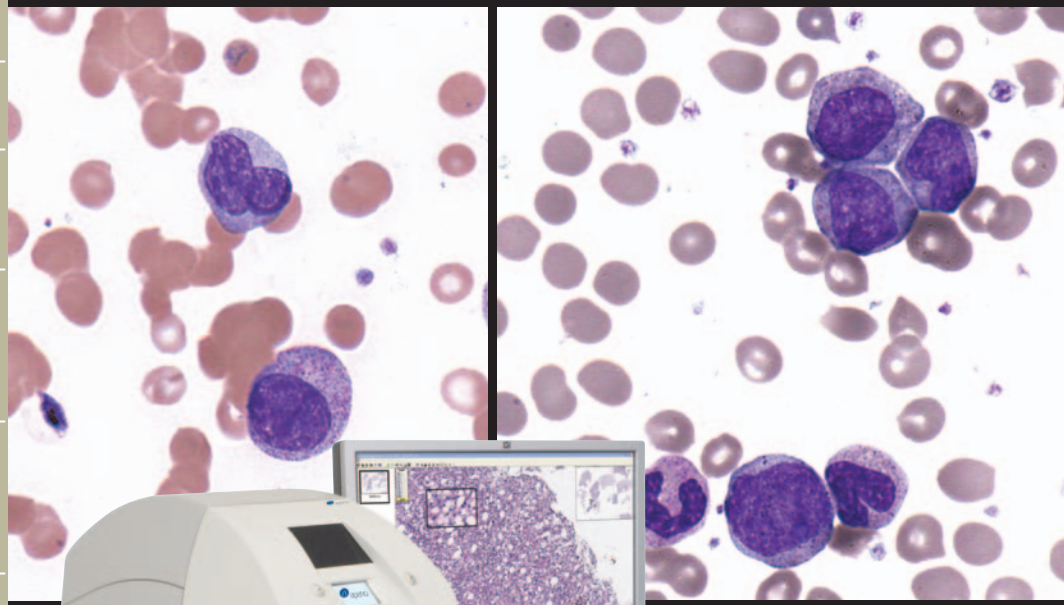
AC 100-240, 50/60 Hz

## COMPLIANCE

CE, FCC

## WARRANTY

12 Months



The ScanScope® CS with Oil Immersion features a five-slide tray for multiple dry slide scanning and a single-slide tray for oil immersion scanning.

We also offer the ScanScope® OS, a dedicated, optimized scanner for oil immersion applications.

For more information about our solutions for digital pathology, please visit [www.aperio.com](http://www.aperio.com) or call us at 866-478-4111.

**HEADQUARTERS**  
Aperio  
1360 Park Center Drive  
Vista, CA 92081

Main: 866.478.4111  
Fax: 760.539.1116  
info@aperio.com  
support@aperio.com  
www.aperio.com

**EUROPEAN OPERATION**  
Aperio  
3 The Sanctuary  
Eden Office Park  
Ham Green  
Bristol BS20 0DD, UK

Main: +44 (0) 1275 375 123  
Fax: +44 (0) 1275 373 501  
europeinfo@aperio.com  
europe-support@aperio.com  
www.aperio.com



\*Specifications are subject to change without notice.  
For complete specifications, please contact your Aperio sales representative at 866-478-4111.

Aperio products are FDA cleared for specific clinical applications, and are intended for research use for other applications.  
For clearance updates, visit [www.aperio.com](http://www.aperio.com).

Copyright © 2008, Aperio. All rights reserved. ScanScope®, Spectrum™ and ImageScope™ are trademarks of Aperio. IMC-1064-11212008