

# Whole-Slide Image Analysis Applications for Neuroscience

Steven Hashagen  
CEO, Indica Labs, Inc.

# Topics

- Indica Labs & Aperio Partnership
- Algorithm Integration
- Stain Separation
- Axon Quantification
- Microglial Activation Quantification
- Micro-hemorrhage Event detection
- Amyloid Plaque Counting – brightfield
- Amyloid Plaque Counting – fluorescence
- Product Demonstration
- Questions & Discussion

# Indica Labs & Aperio Partnership

Indica develops specialized image analysis software for leading digital pathology platforms, including Aperio's ScanScope platform.

Our application specific tools provide a unique complement to these general purpose whole slide imaging systems.

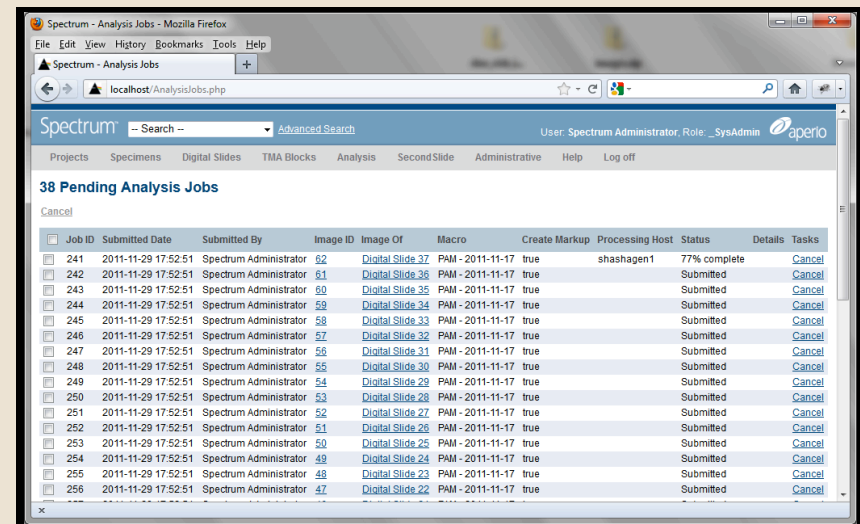
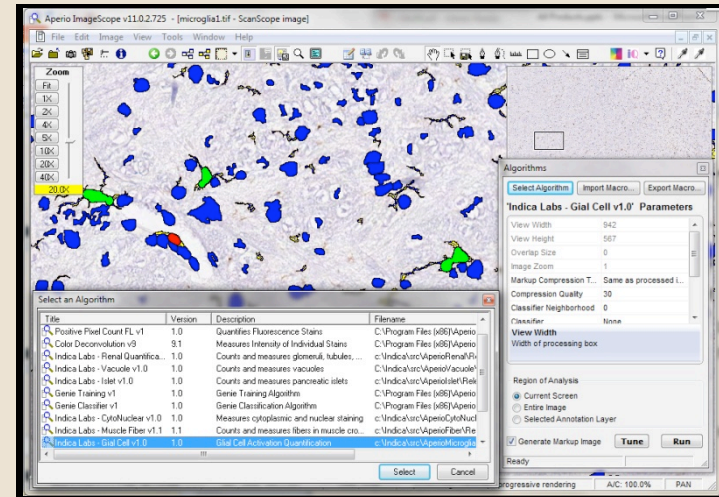
In March, 2012 Aperio became a distributor of Indica's Image Analysis software.

Indica customers include leading pharmaceutical companies, biotechs, CROs, and academic and government research centers.



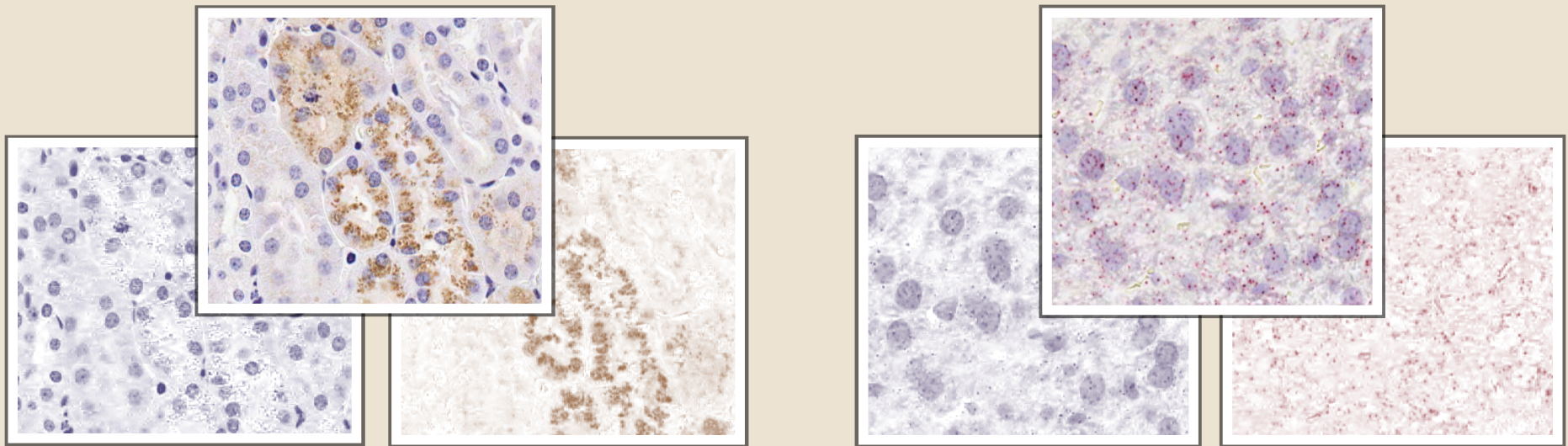
# Algorithm Integration

- Integrates seamlessly into Aperio's ImageScope and Spectrum
- Compatible with GENIE
- Compatible with TMALab
- User never leaves the Aperio environment. Generated data and images remain part of the Aperio environment.
- Compatible with a variety of other file formats including Mirax, Hamamatsu, Bioimagene, TIFF, JPG photomicrographs.

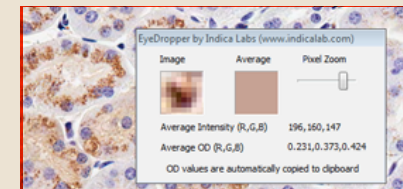


# Stain Separation

Separate nuclear stain from positive stain



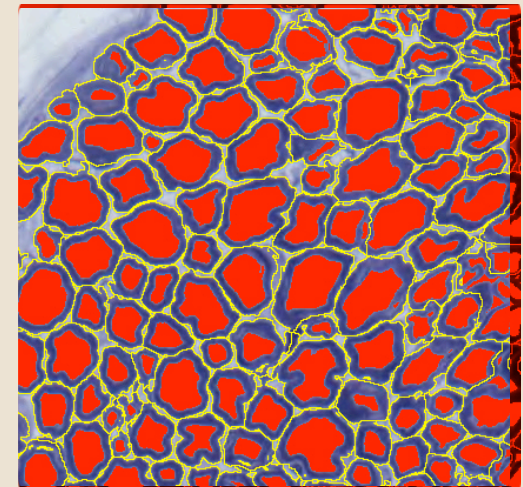
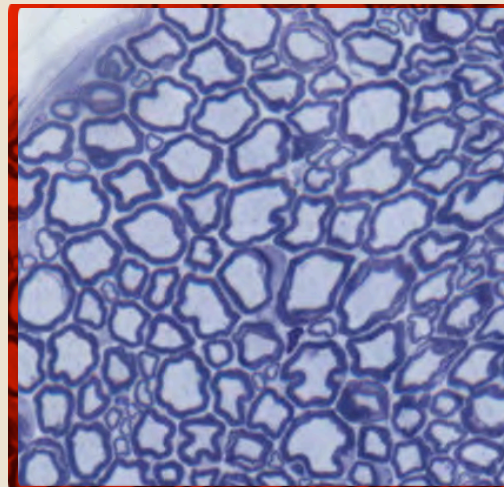
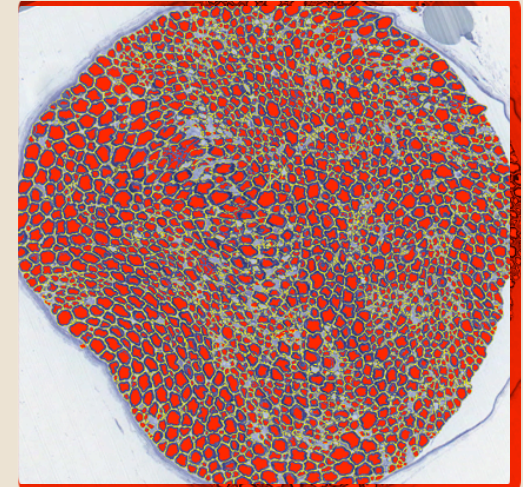
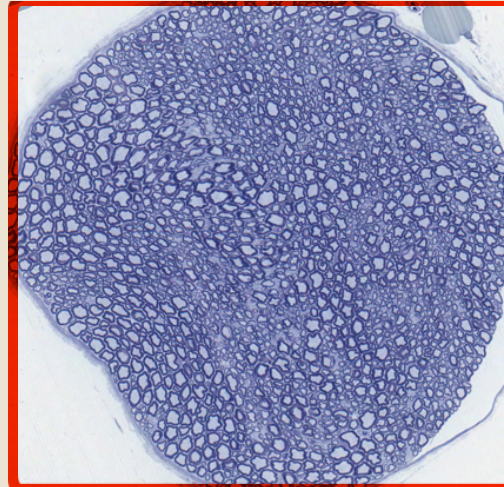
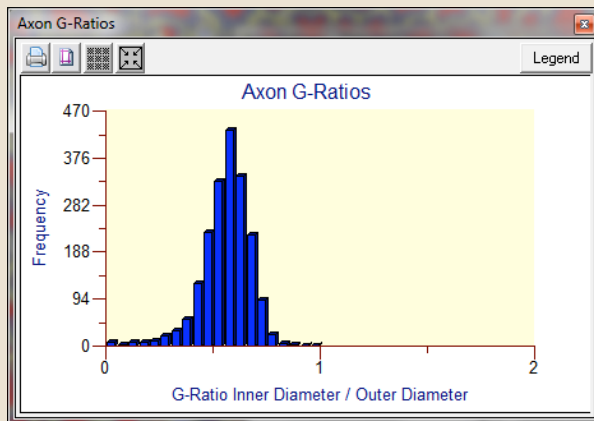
TIP: Use ImageScope eyedropper plugin to simplify stain selection. FREE download from [indicalab.com](http://indicalab.com).



# Axon Quantification

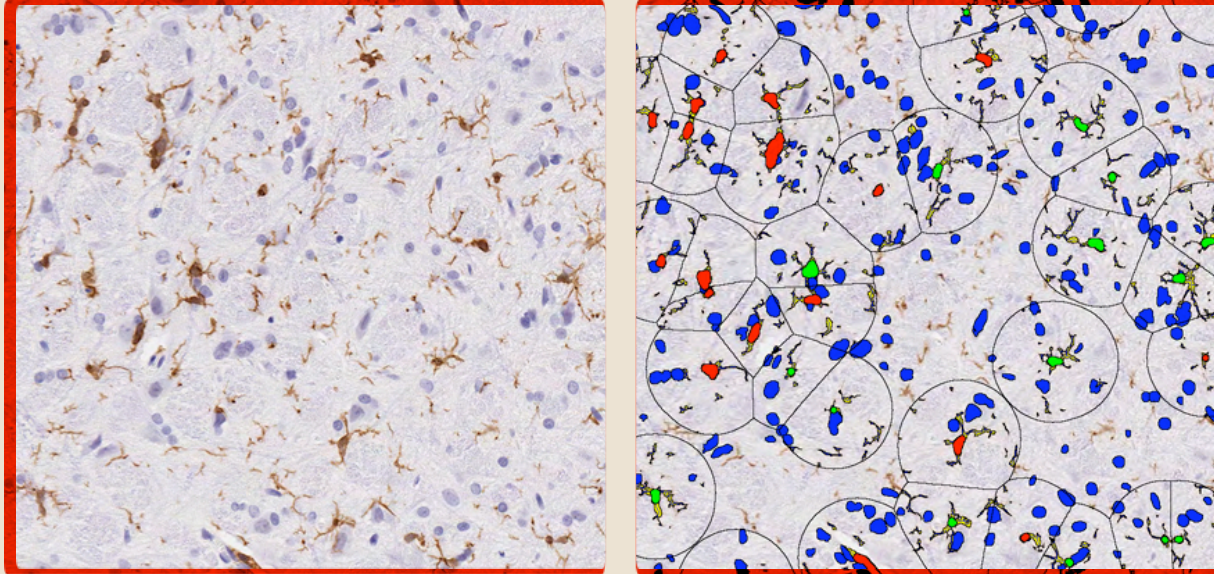
This tool reports:

- Total Axon Count
- Total Axon Area
- Total Myelin Area
- Average Myelin Thickness
- Average Axon inner & outer diameters
- **Average Axon G-Ratio**
- Axon G-Ratio Histogram



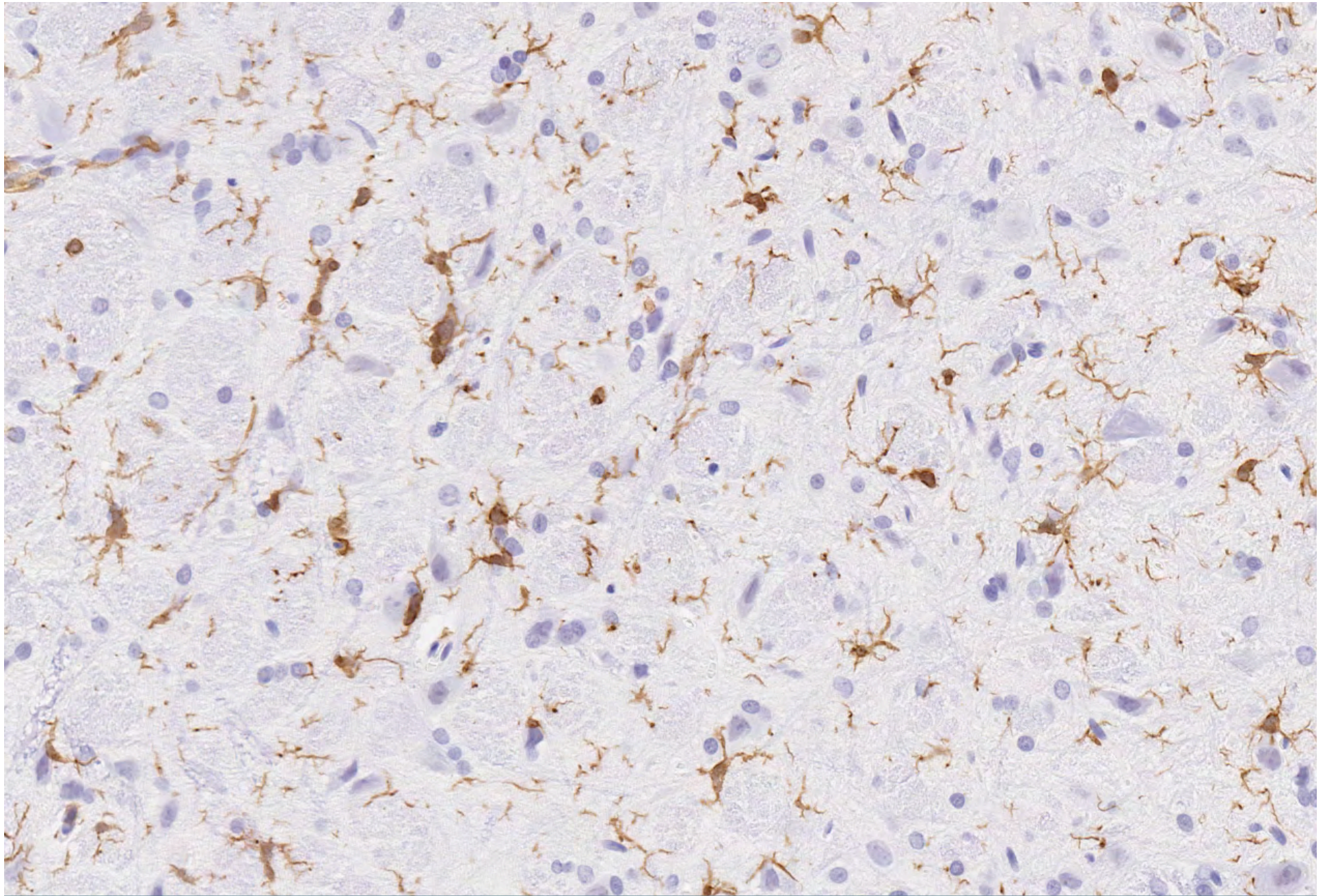
Sciatic nerve stained with toluidine blue

# Microglial Activation Quantification



Measures microglial activation levels by reporting:

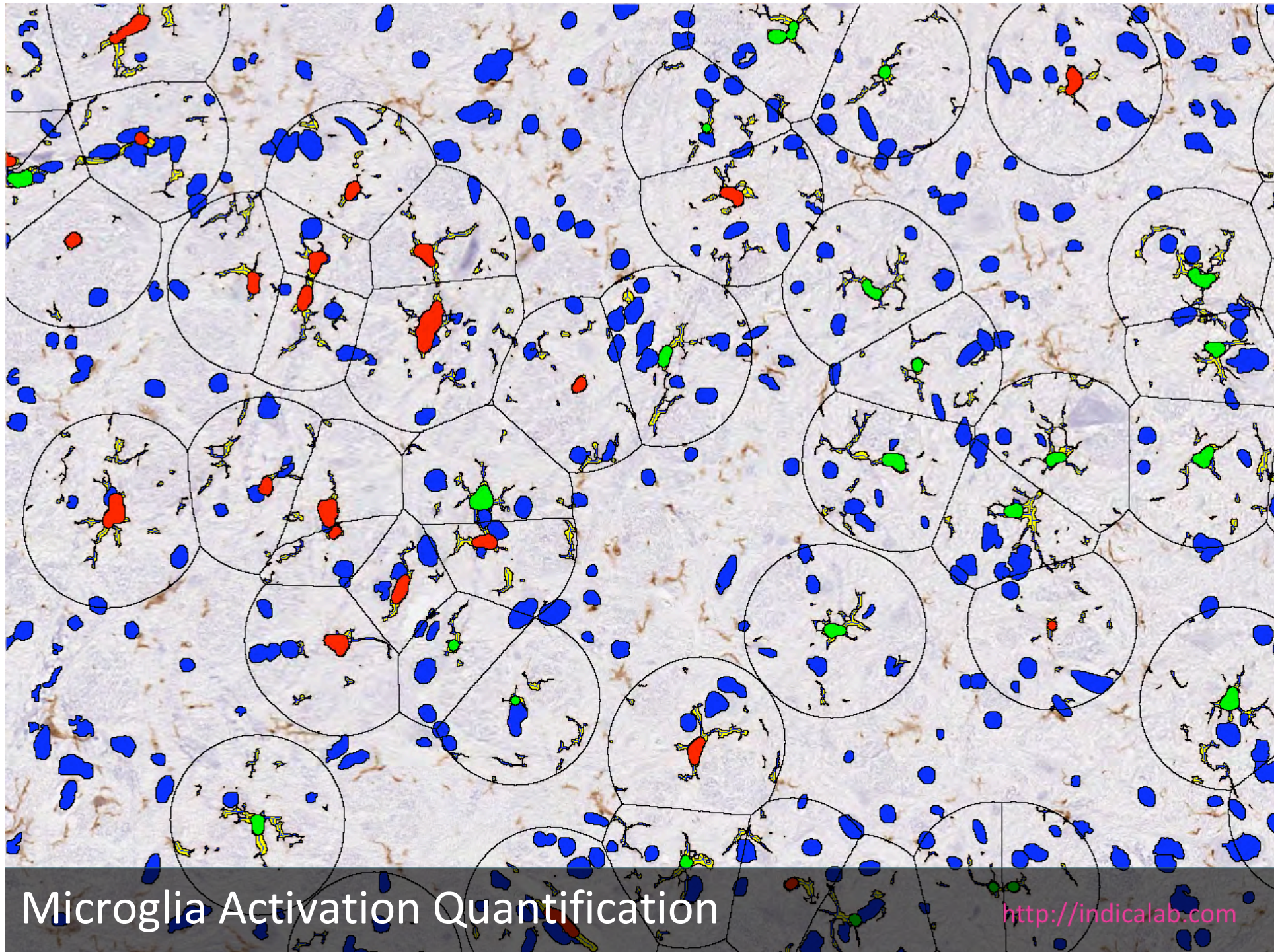
- Total non-glial cells
- Total glial cells (activated or resting)
- Total process length
- Total process area
- Average process thickness
- Average process length per cell
- Average process area per cell



Microglia Activation Quantification

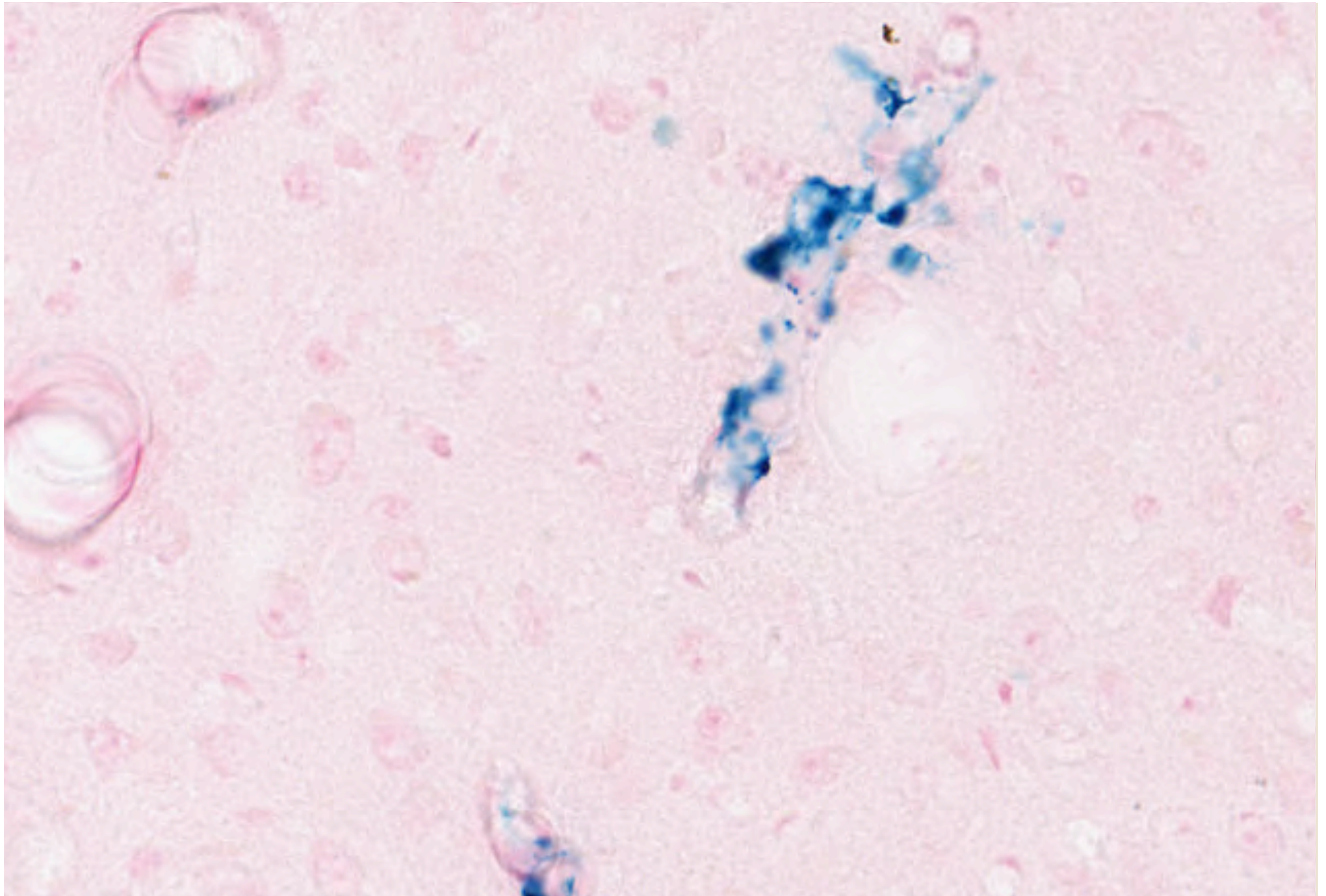
<http://indicalab.com>





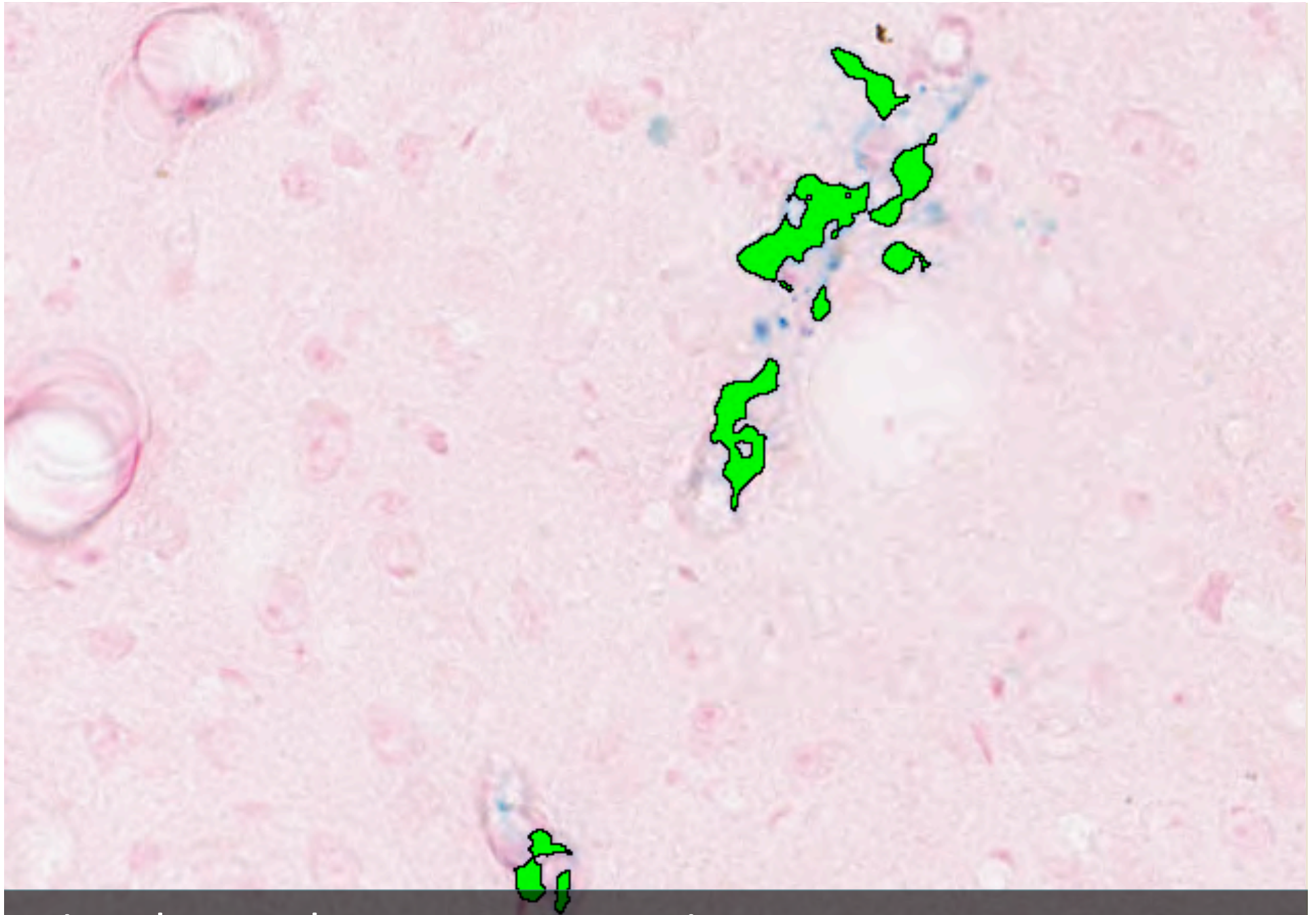
Microglia Activation Quantification

<http://indicalab.com>



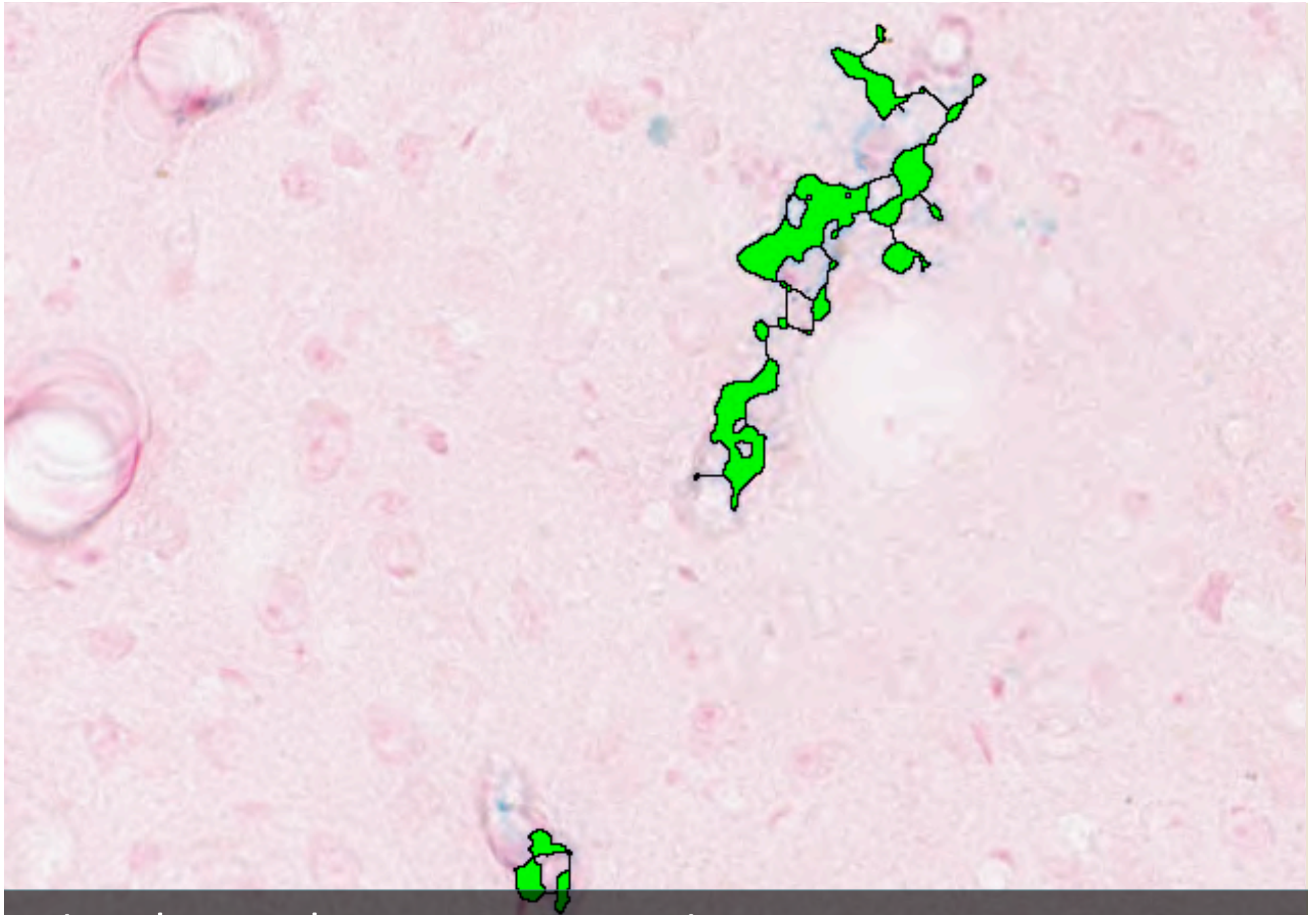
Micro-hemorrhage Event Detection

<http://indicalab.com>



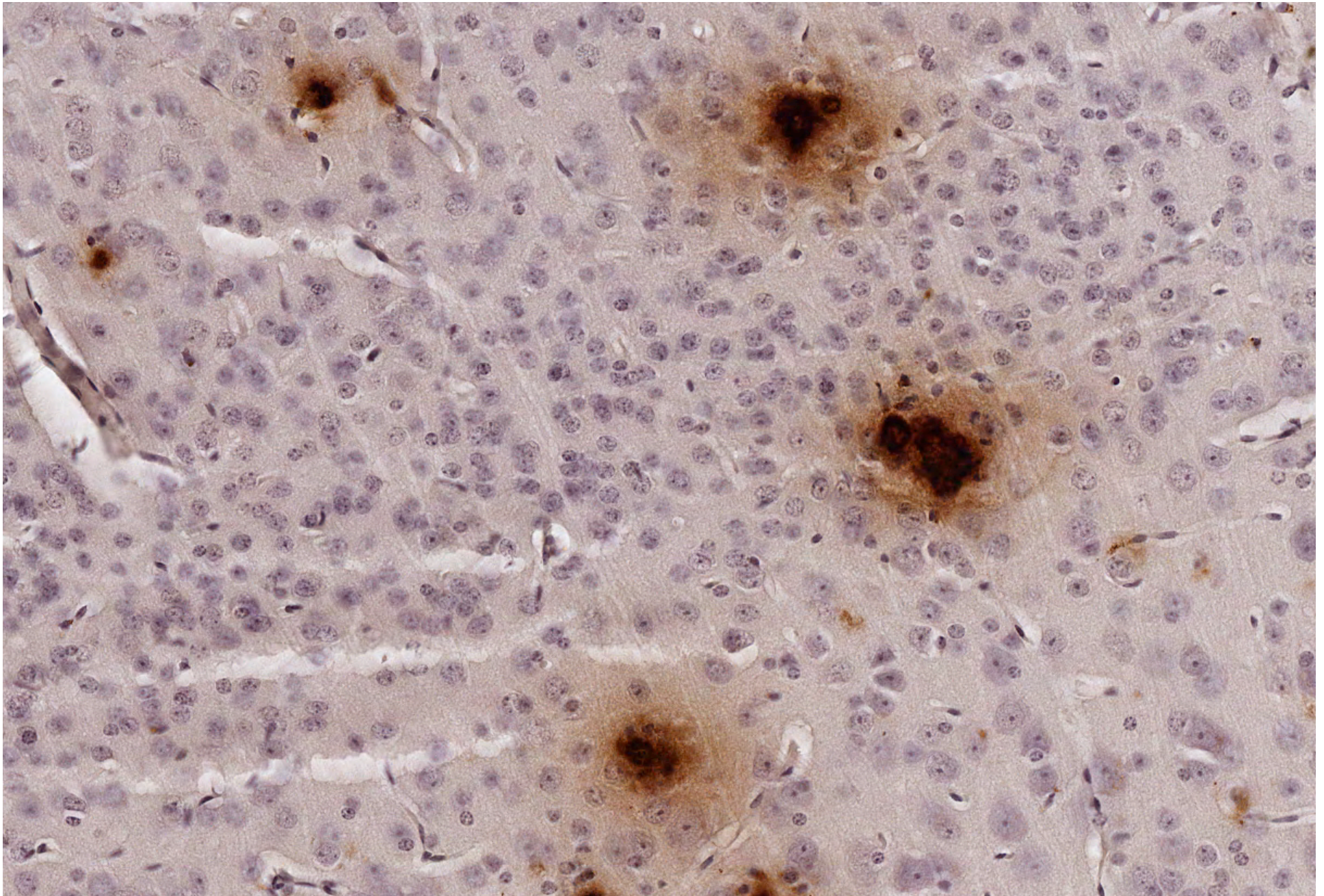
Micro-hemorrhage Event Detection

<http://indicalab.com>

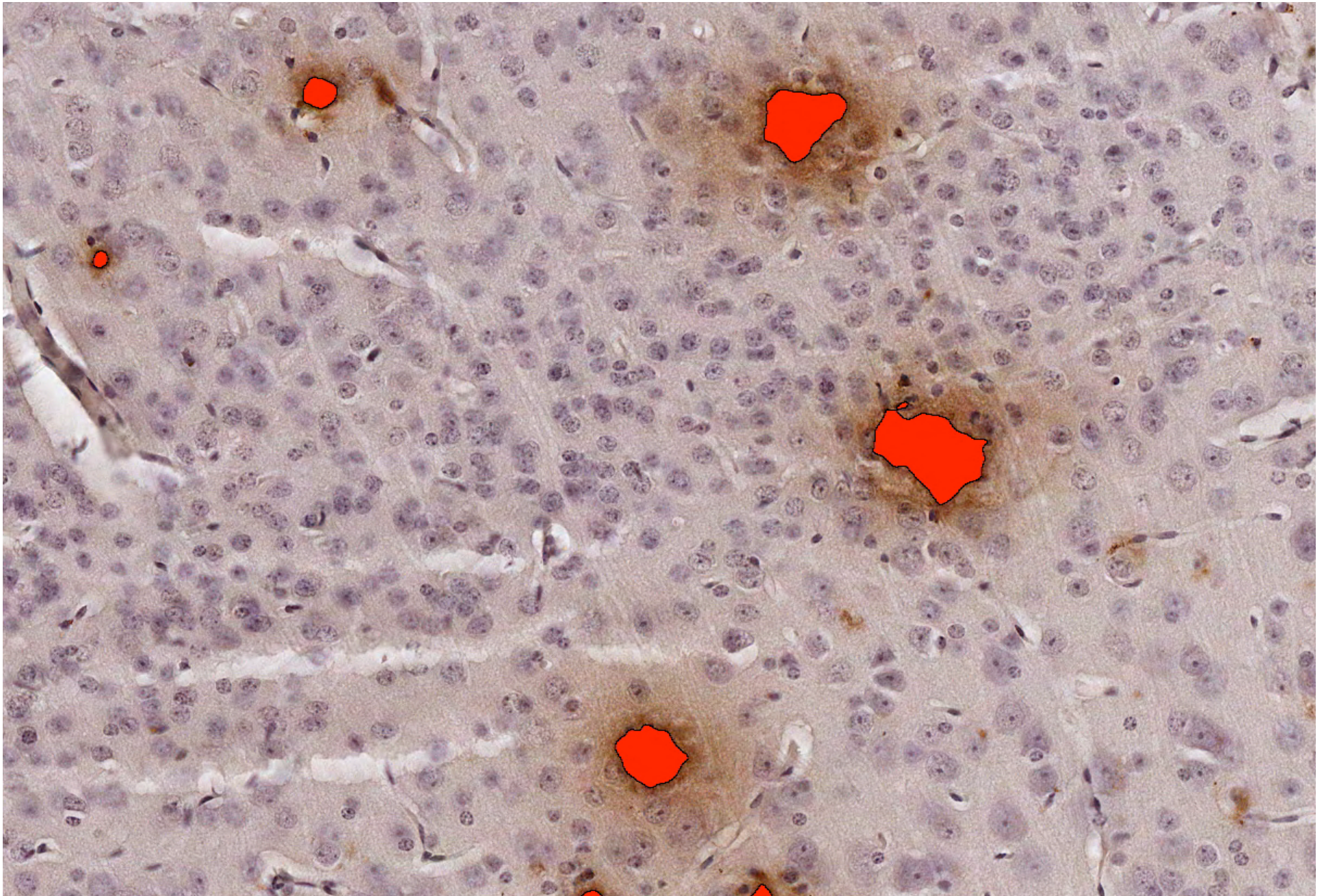


Micro-hemorrhage Event Detection

<http://indicalab.com>



Amyloid Plaque Counting - Brightfield

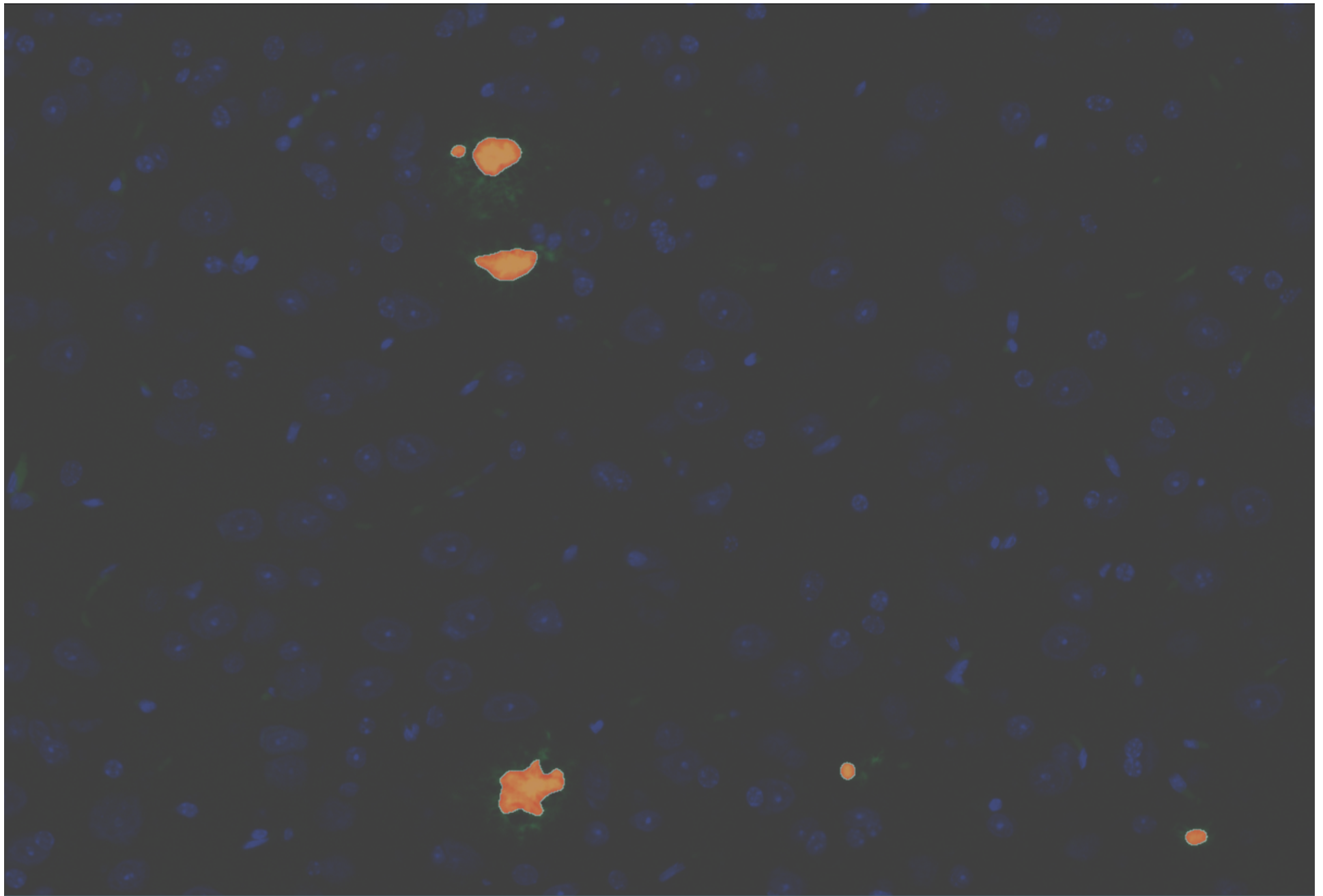


Amyloid Plaque Counting - Brightfield



Amyloid Plaque Counting - Fluorescence

<http://indicalab.com>



Amyloid Plaque Counting - Fluorescence

<http://indicalab.com>



# Live Demonstration

# Thank You

Questions and Comments?